

KEELING COAL TRAIL

Friends of South Side Park presenting to the
City of Pittsburgh Commission on Naming Public Properties

July 6, 2020

Designees: Kitty Vagley & Janice Serra



To substantially help with wayfinding in South Side Park, and harkening to the park's industrial historical roots, Friends of South Side Park would like to officially name a trail currently known as *Unnamed Trail 1*, to become ***Keeling Coal Trail***.

KEELING COAL TRAIL

- South Side Park is a 65 acre Signature Community Park within the City of Pittsburgh.
- There is a 900 linear feet trail within the park that is heavily used, but has no official name. It is labeled on our map as *Unnamed Trail 1*. It is also unofficially referred to as the *1040 Trail* and the *Coal Seam Trail* in the Master Plan.
- The trail connects *Quarry Trail* (which starts just above the football field off 18th Street, on Saber Way) with the upper end of *Bandi Schaum Trail* (which starts at the Bandi Schaum Community Garden, just off Mission Street.)
- We chose the name *Keeling Coal Trail* because of the important role that the Keeling Coal Company played in the historical industrial roots of what is now known as South Side Park.

FOSSP Friends of South Side Park



Mission - to protect, improve, revitalize and promote Pittsburgh's South Side Park.

Vision - to preserve South Side Park's rich heritage of its industrial past, while fostering collaboration, education, resources, and funding for a vital future, for all people to enjoy and share this restorative and treasured space.

- all-volunteer advocacy organization started in May 2016
- community liaison to and from the City, neighborhood and non-profit partner organizations
- meets regularly and publicly to plan revitalization and beautification projects - trail work, tree plantings, clean-ups, fighting invasive plants, implementing 2018 Master Plan
- two main outreach events: Goat Fest and Star Party (partnering with the City Rangers)



City of Pittsburgh official map for South Side Park with the *Unnamed Trail 1* (circled in green) as the dotted line just above South Side Park Trail.

MASTER PLAN - Overview

1. Parcel acquired for green infrastructure
2. Renovated parking (30 spots)
3. Drive
4. ADA-accessible boardwalk
5. Parking (60 spots)
6. Shared-use (bike) path
7. Community event area
8. Open-air pavilion over small building (includes ballrooms)
9. Amphitheater
10. Lawn
11. Paved push-ramp for cyclists and green infrastructure detention cells
12. Renovated entrance with parking (5 spots)
13. Children's Discovery Garden
14. Basketball court + marble rings
15. Resurface rectangular field with subsurface detention
16. Embankment bleachers
17. Renovated ballrooms, concessions, scoreboard
18. Parking (40 spots)
19. Public art opportunity
20. BMX pump track (third-party operator)
21. Trail for BMX access
22. Embankment slides
23. Ropes course (third-party operator)
24. Embankment bleachers and new scoreboard
25. Sculptural overlook + parking (9 spots)
26. Basketball court and play area renovations
27. Renovate Arlington Rec Center
28. Manage invasive species with native planting
29. Seating at Jurassic Valley Overlook
30. 1040 Trail and interpretive art

31. East/West Connector Trail
32. Revealed scoops + seating
33. Tombstone Trail considered for ADA accessibility
34. Trail through plateau and wetlands + picnic platforms
35. New Sierra St. entrance, steps + Sierra Connector Trail
36. Canopy overlook
37. Boardwalk and wetlands
38. Mission St. Connector Trail
39. Renovated parking and entrance area with seating
40. Drive gated (vehicle access for garden members)



2018
South
Side Park
Master
Plan

#30 using
unofficial
name of
1040 Trail



Perspective rendering (Studio Bryan Hanes) from the South Side Park Master Plan showing a coal car viewing deck as an example of historic interpretive art that could be placed along the Keeling Coal Trail.

**Entrance to
Keeling Coal
Trail, peeling off
to the left from
the Quarry Trail.**



Rock outcrop visible from the trail is where the former coal seam ran along the 1040 contour through the park.



The Keeling Coal Trail has some of the park's most secluded and peaceful hiking areas, along with several small stream crossings.



**Trailhead
entrance from
the Bandi
Schaum Trail,
peeling off to
the left.**

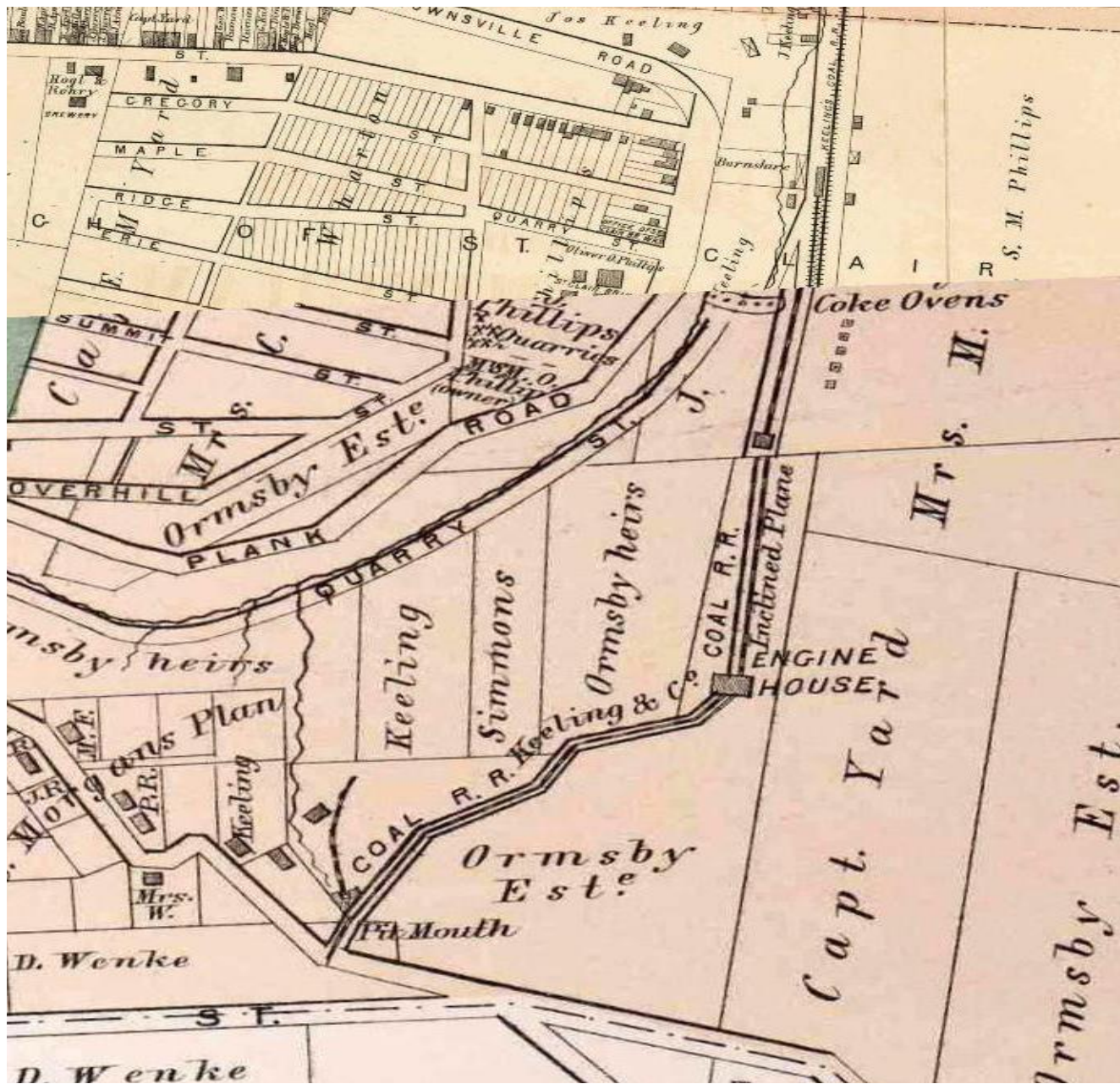


FOSSP supports the name **Keeling Coal Trail** because of the industrial historical significance that the **Keeling Coal Company**, led by **Joseph Keeling**, had on the area now known as South Side Park.

- The **Keeling Coal Company** (KCC) was a coal mining company in Allegheny County. Its mines were located in the Pittsburgh Coalfield of western Pennsylvania.
- KCC operated the Ormsby Coal Mine from 1861 to May 1878. (Prior to that, the Ormsby Family ran it from 1838-1861.) The Birmingham Coal Company then took over operations, which had **Joseph Keeling** as one of its partners.
- The “Coal Road” was a network of coal mining and transport, begun in 1867, that stretched from the South Hills of Pittsburgh through mostly underground tunnels, and brought the coal via tail rope system and later a steam locomotive, to the Ormsby Mine Pit Mouth entrance, which is located in South Side Park, just below St. Patrick Street (behind the Arlington Fire Station #22).
- From the Pit Mouth, the coal made its way down an inclined gravity plane (built between 1838 and 1844), to a narrow gauge railroad (Birmingham Coal Railroad), down 21st Street, and on to the Monongahela River for further distribution.
- When the engine-house of the coal road burned shortly before the expiration of **Keeling's** lease on the mine, the lease was not renewed.

(https://en.wikipedia.org/wiki/Keeling_Coal_Company)

(see references in full application)



*"1872 Atlas of the Cities of Pittsburgh..."
G.M. Hopkins & Co.*

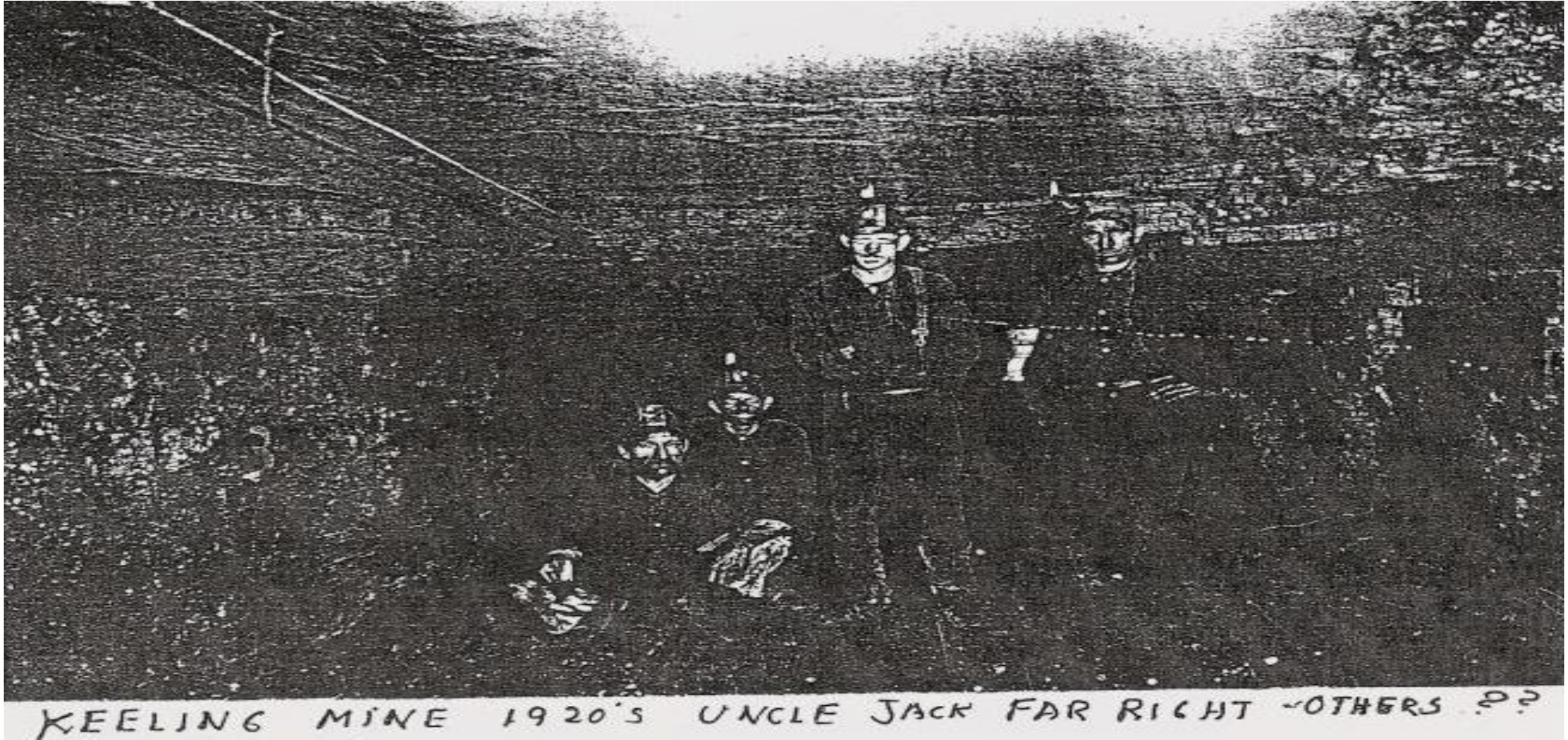
*The Keeling & Co. Pit Mouth, Coal
Railroad, Engine House, and Inclined
Plane ran through the area that is now
South Side Park.*

*The Pit Mouth is on current day St. Patrick
Street (next to Arlington Fire Station).
Plank Road is now 18th Street.*

*We hope for a historical interpretive sign
to be installed at the location where we
believe the Keeling Coal Railroad crossed
over what is the current location of our
Unnamed Trail 1.*



We've come a long way! 1910 photograph of South Side Park plateau area after industry left its mark. The narrow gauge railroad tracks are in the foreground. (provided by Bill Landon).



Miners in the Keeling Coal Company mine. http://wiki.carrick-overbrook.org/Keeling_Coal_Company

LETTERS OF SUPPORT

- #1 from Marcelle Newman, Assistant Director, City of Pittsburgh DPW
- #2 from Barbara Rudiak, President, South Side Community Council
- #3 from Blake McLaren, Board of Directors President, South Side Slopes Neighborhood Association
- #4 from Bruce Kraus, Councilman, City of Pittsburgh, District Three
- #5 from Debra Morgan, President, The Arlington Civic Council

COMMUNITY SUPPORT



The 2018 South Side Park Master Plan, involved extensive community meetings and input. Stakeholders approved of this additional trail as being a historical interpretive trail bringing attention to the coal seam that travels along the 1040 contour and its associated industry.

We solicited our 400+ membership and 1,000+ Facebook Followers to submit potential names for the *Unnamed Trail 1*.

Keeling Coal Trail was unanimously adopted at our November 20, 2019 General Meeting!

Thank you!

Questions?

